

# MICRO SWITCH

## EJF SERIES



### FEATURES

- 1-piece spring mechanism design offering durable acute operation and nice touch feeling
- Heavy/Light operation force specifications
- High flux-tight structure
- High solder reliability



### APPLICATIONS

- Communication equipment
- Security systems
- Office automation appliances
- General industrial machines

### SPECIFICATIONS

|                         |  |
|-------------------------|--|
| Ratings                 | 125VAC 3A; 125VAC 1A; 125VAC 0.1A          |
| Circuit arrangement     | Single pole Double throw (1c), snap action |
| Pitch between terminals | 5.08mm                                     |

#### 1.ELECTRICAL PERFORMANCE

|                            |                              |
|----------------------------|------------------------------|
| Insulation resistance      | 100M $\Omega$ Min. at 500VDC |
| Dielectric strength        | 1000VAC Min. for 60sec       |
| Initial contact resistance | 100m $\Omega$ Max.           |

#### 2.MECHANICAL PERFORMANCE

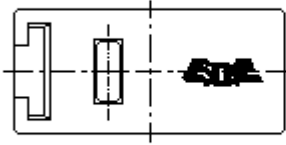
|  |  |
|--|--|
| Operating Force (OF)<br>Release Force (RF)<br>Pre-travel (PT)<br>Operating Position (OP)<br>Free Position (FP) | see attached drawing   |
| Vibration Resistance (Without lever)   | 10 to 55 Hz amplitude of 1.5mm                                   |
| Terminal strength  | 1.2Kg(1 minute) in the direction of the axis of solder terminals |



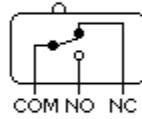
## DIMENSIONS

### EJF-11110 DIMENSIONS

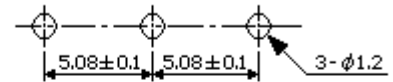
P/N: EJF1111000 UNIT:mm(inch)



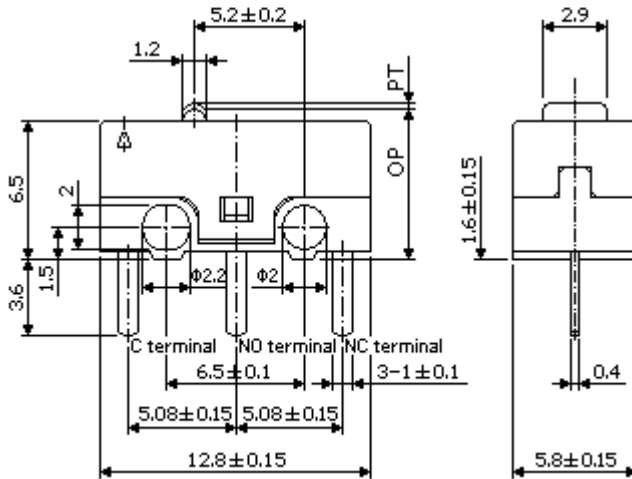
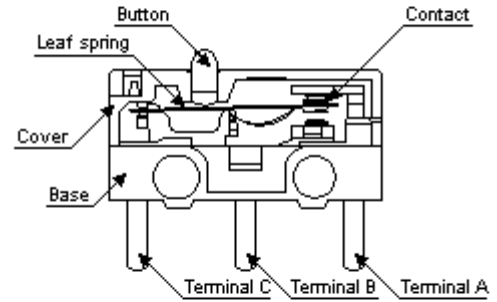
CIRCUIT DIAGRAM



P.C.B LAYOUT



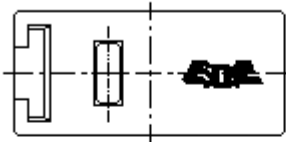
CONSTRUCTION



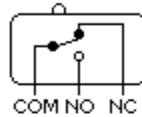
|                               |                    |
|-------------------------------|--------------------|
| 1. Operating Force (OF)       | 75gf (0.74N) Max.  |
| 2. Release Force (RF)         | 10gf (0.098N) Min. |
| 3. Pre-travel (PT)            | 0.5mm Max.         |
| 4. Movement Differential (MD) | 0.12mm Max.        |
| 5. Operating Position (OP)    | 5.5±0.3mm          |

### EJF-11120 DIMENSIONS

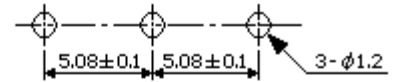
P/N: EJF1112000 UNIT:mm(inch)



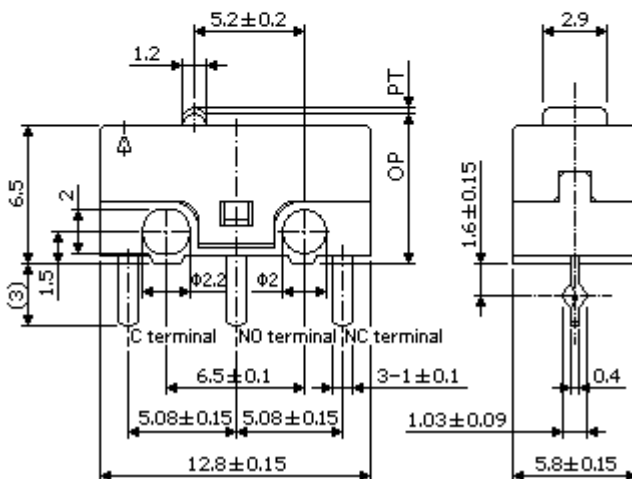
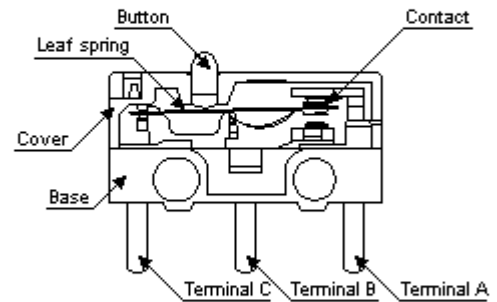
CIRCUIT DIAGRAM



P.C.B LAYOUT



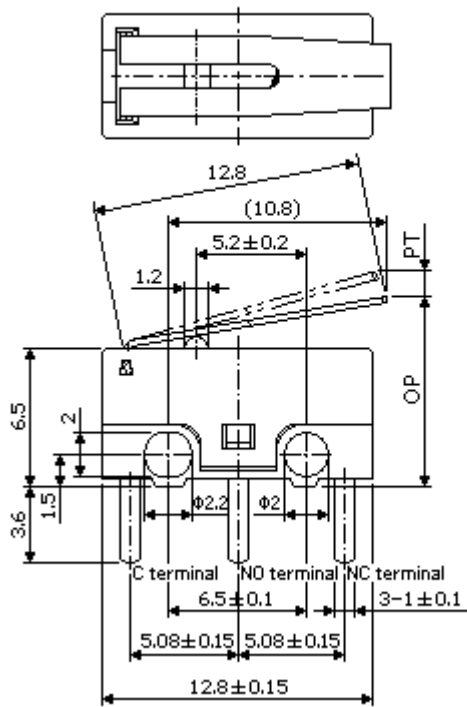
CONSTRUCTION



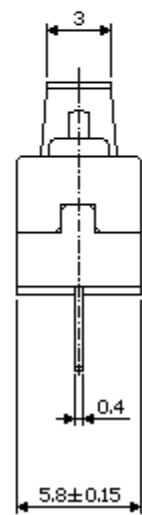
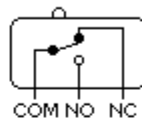
|                               |                    |
|-------------------------------|--------------------|
| 1. Operating Force (OF)       | 75gf (0.74N) Max.  |
| 2. Release Force (RF)         | 10gf (0.098N) Min. |
| 3. Pre-travel (PT)            | 0.5mm Max.         |
| 4. Movement Differential (MD) | 0.12mm Max.        |
| 5. Operating Position (OP)    | 5.5±0.3mm          |

### EJF-11210 DIMENSIONS

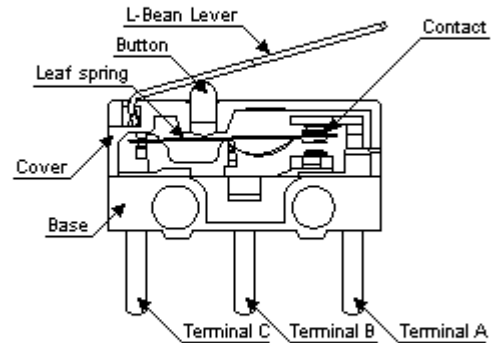
P/N: EJF1121000 UNIT:mm(inch)



CIRCUIT DIAGRAM



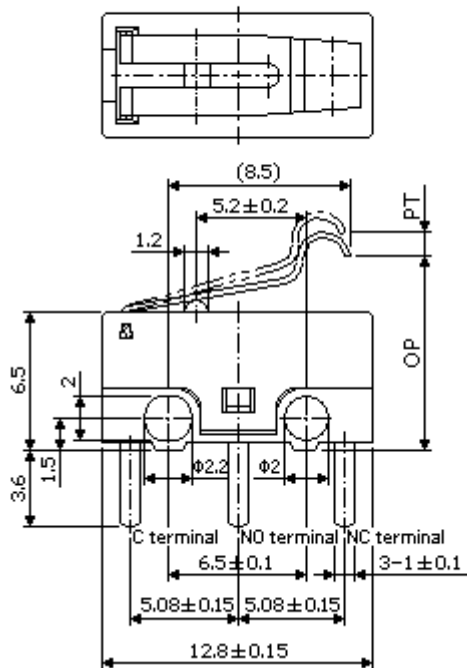
CONSTRUCTION



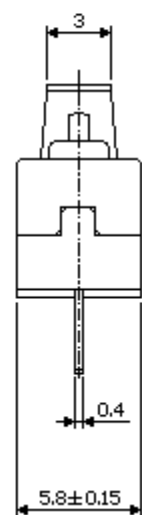
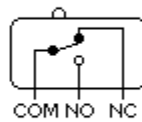
|                               |                   |
|-------------------------------|-------------------|
| 1. Operating Force (OF)       | 50gf (0.49N) Max. |
| 2. Release Force (RF)         | 10gf (0.1N) Min.  |
| 3. Pre-travel (PT)            | 2.1mm Max.        |
| 4. Movement Differential (MD) | 0.5mm Max.        |
| 5. Operating Position (OP)    | 8.3±0.12mm        |

### EJF-11410 DIMENSIONS

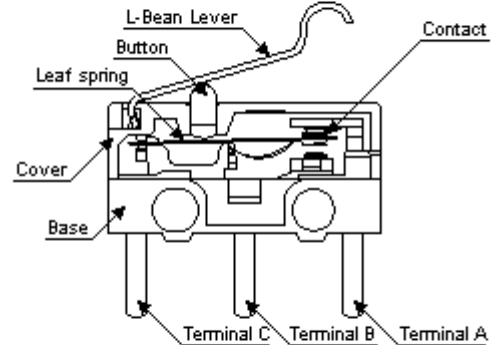
P/N: EJF1141000 UNIT:mm(inch)



CIRCUIT DIAGRAM



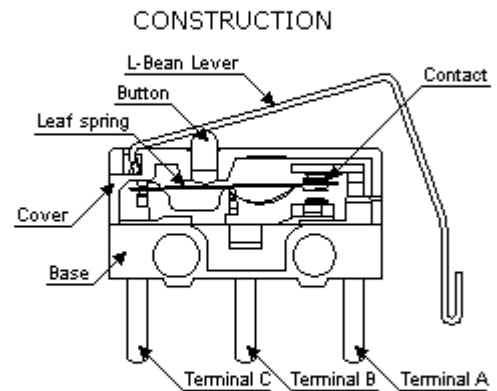
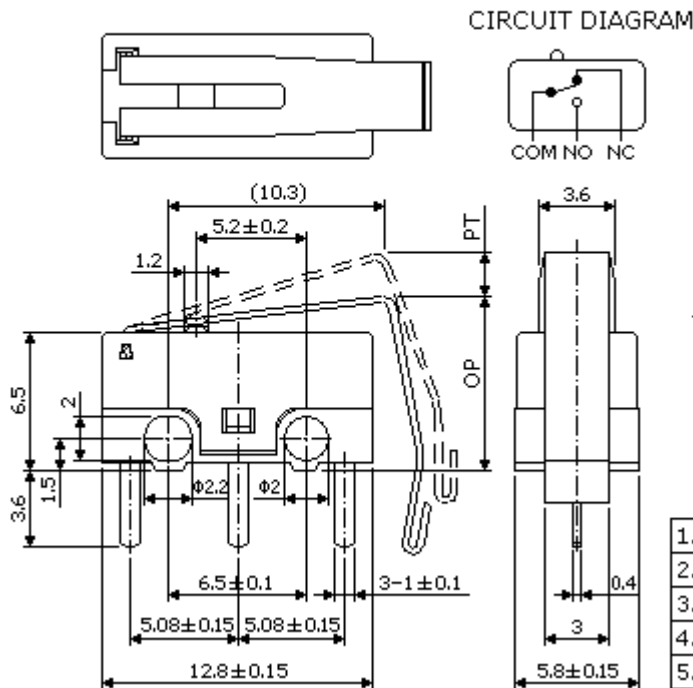
CONSTRUCTION



|                               |                   |
|-------------------------------|-------------------|
| 1. Operating Force (OF)       | 50gf (0.49N) Max. |
| 2. Release Force (RF)         | 10gf (0.1N) Min.  |
| 3. Pre-travel (PT)            | 2.1mm Max.        |
| 4. Movement Differential (MD) | 0.5mm Max.        |
| 5. Operating Position (OP)    | 9.2±0.12mm        |

## EJF-11510 DIMENSIONS

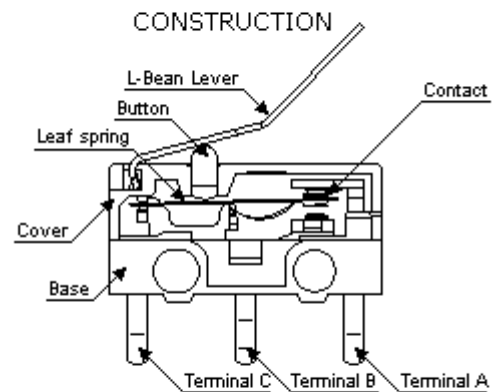
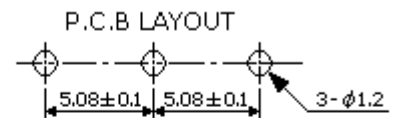
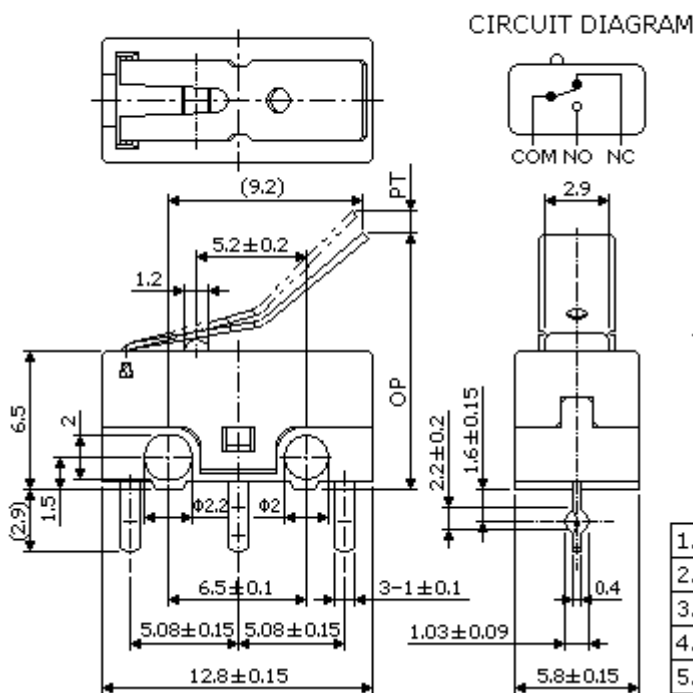
P/N: EJF1151010 UNIT:mm(inch)



|                               |                  |
|-------------------------------|------------------|
| 1. Operating Force (OF)       | 50gf (0.5N) Max. |
| 2. Release Force (RF)         | 10gf (0.1N) Min. |
| 3. Pre-travel (PT)            | 2.2mm Max.       |
| 4. Movement Differential (MD) | 0.5mm Max.       |
| 5. Operating Position (OP)    | 8.3±0.5mm        |

## EJF-11520 DIMENSIONS

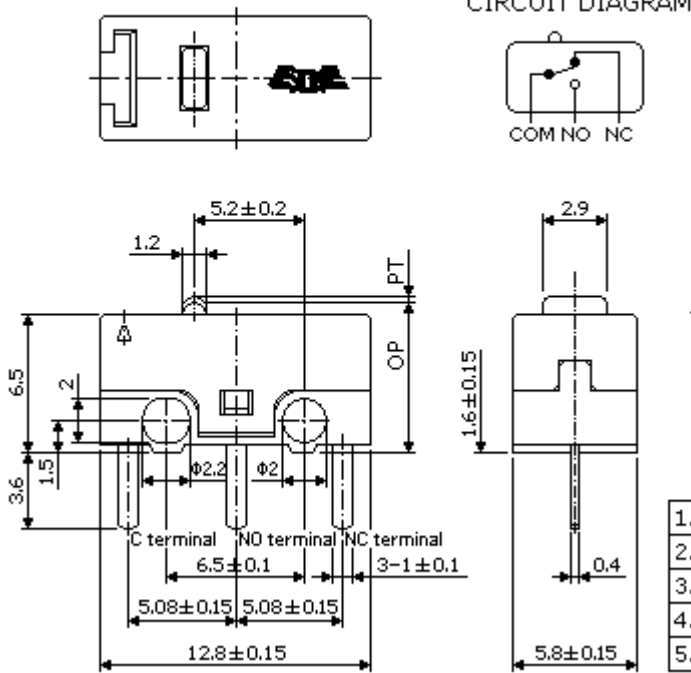
P/N: EJF1152000 UNIT:mm(inch)



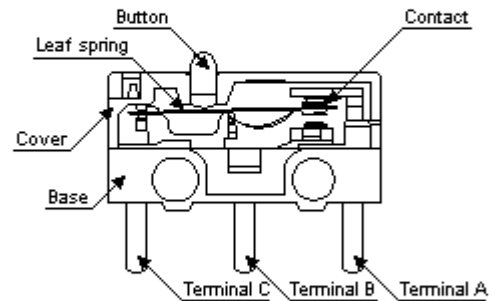
|                               |                   |
|-------------------------------|-------------------|
| 1. Operating Force (OF)       | 50gf (4.9N) Max.  |
| 2. Release Force (RF)         | 10gf (0.98N) Min. |
| 3. Pre-travel (PT)            | 2.1mm Max.        |
| 4. Movement Differential (MD) | 0.5mm Max.        |
| 5. Operating Position (OP)    | 12.8±0.15mm       |

## EJF-21110 DIMENSIONS

P/N: EJF2111000 UNIT:mm(inch)



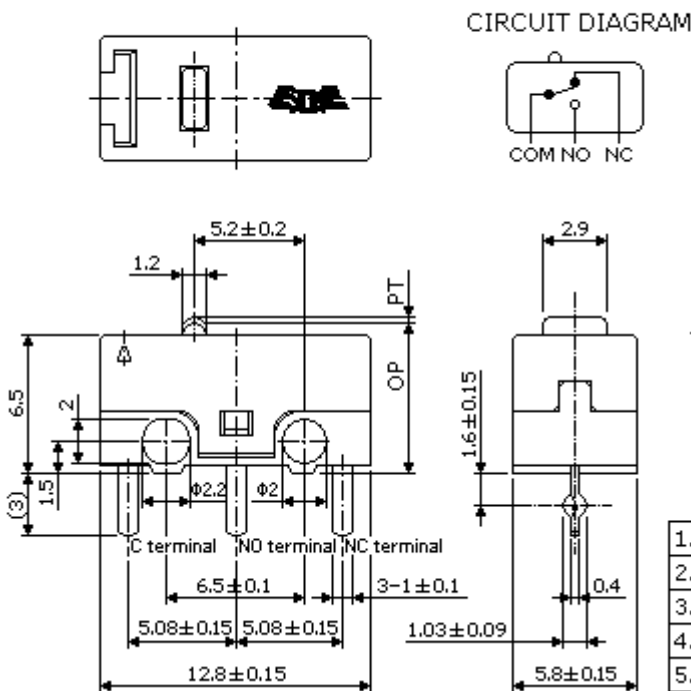
### CONSTRUCTION



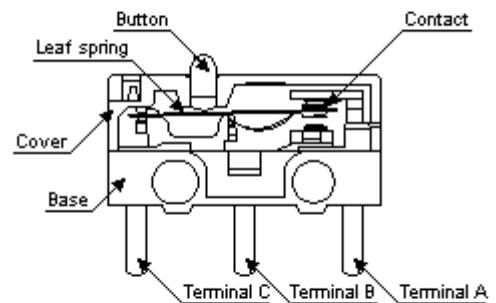
|                               |                    |
|-------------------------------|--------------------|
| 1. Operating Force (OF)       | 150gf (1.47N) Max. |
| 2. Release Force (RF)         | 30gf (0.29N) Min.  |
| 3. Pre-travel (PT)            | 0.5mm Max.         |
| 4. Movement Differential (MD) | 0.12mm Max.        |
| 5. Operating Position (OP)    | 5.5±0.3mm          |

## EJF-21120 DIMENSIONS

P/N: EJF2112000 UNIT:mm(inch)



### CONSTRUCTION



|                               |                    |
|-------------------------------|--------------------|
| 1. Operating Force (OF)       | 150gf (1.47N) Max. |
| 2. Release Force (RF)         | 30gf (0.29N) Min.  |
| 3. Pre-travel (PT)            | 0.5mm Max.         |
| 4. Movement Differential (MD) | 0.12mm Max.        |
| 5. Operating Position (OP)    | 5.5±0.3mm          |